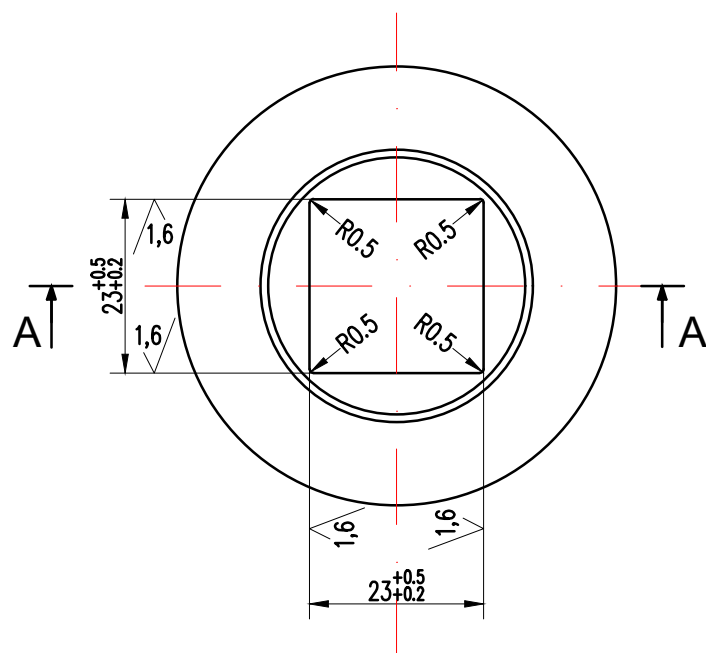
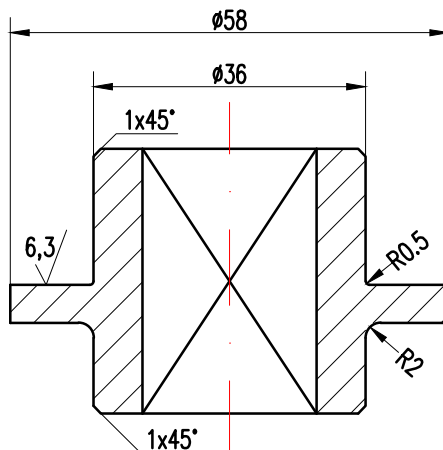


ACEST DOCUMENT ESTE PROPRIETATEA SOCIETATII ELLIS'92 S.R.L.-PLOIESTI. IN CONSECINTA, FIRMA ARE DREPTUL
EXCLUSIV DE FOLOSIRE A DESENULUI SAU DE OPERARE A EVENTUALELOR MODIFICARI DIN CAMPUL ACESTUIA.



A - A



| | | | | | | | | | | | |
|---|-----------|-------------|---|---|------|---|-------------------------|---------------------|--------|-------------|--|
| 3 | | | | 6 | | | | | | | |
| 2 | | | | 5 | | | | | | | |
| 1 | | | | 4 | | | | | | | |
| Rev. | Descriere | | Data | Semnat | Rev. | Descriere | | Data | Semnat | | |
| Acest document este proprietatea S.C. ELLIS'92 S.R.L. si nu va fi comunicat fara autorizare | | | | | | | | | | | |
| Intocmit | | Verificat | Aprobat | Beneficiar | | Denumire proiect | | | | | |
| Mircea Parvulescu | | Razvan Nita | Androne Ionescu | CONPET S.A. | | REABILITARE RAMPA DE INCARCARE TITEI MARGHITA, JUD. BIHOR | | | | | |
| <div><div>92</div><div>ELLIS</div><div>arhitectura proiectare inginerie consultanta tehnica</div></div> | | | <div><div>SR AC</div><div>ISO 9001</div><div>CERTIFICAT</div></div> | COLECTOR DE SLOPS ROATA MANEVRA BUCSA 1 | | | Nr.: A636.4-DT-05.04.03 | | | | |
| | | | | | | | Scara: 1:1 | | | | |
| | | | | Material: S235JR | | Masa: 0.235 kg | | Index: A636.4-DT-BD | | REV.0 | |
| | | | | | | | | Data: 06.2018 | | Plansa: 1/1 | |